

The Devon Darlin' 11

D11C



Devon Wooden Boats Ltd. is founded on the principle that beautiful boats can also be practical. Our boats feature modern hull designs and construction techniques while exuding all the beauty, glamour and spirit of traditional 1920's designs.

Practicality is achieved through innovative ideas. For example, the dinghies have built-in fully retractable launching wheels. These are positioned at the centre point of the dinghy, balanced fore and aft, making for lighter and easier launching and recovery.

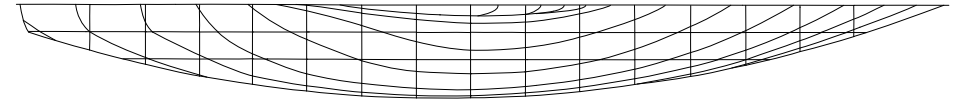
We use the finest Mahogany and Sapele marine plywood along with Utile Mahogany and Sitka Spruce. Even the oars are laminated with a Mahogany centre and Douglas Fur outer, and then hand shaped. The whole boat is glued using West System Epoxy. We finish the boat with SP System wood protection and Epifanes 2-Part Polyurethane paints and varnish to maintain the quality of finish even with regular use.

Specifications:

Length: 11' 4" (3.45m)
Beam: 4' 5" (1.35m)
Draft: 4" (10cm)
Persons: 3 Max (225kg)
RCD: Category D.

Weight: 238 lbs (108kg)
Engine: 2.5HP MAX STD SS
Wheels: Puncture & Slash Proof
Material: Wood
Price: POA

DEVON WOODEN BOATS LTD.



The Devon Darlin' 11



Amphibious Rowing Dinghy

D11C

Call Peter on: 07868 397 444

Email: sales@devonwoodenboats.co.uk

www.devonwoodenboats.co.uk

DEVON WOODEN BOATS LTD.



Just step out and keep walking with the boat at your side - no more wondering who has used your launching trolley or where have they left it this time!

